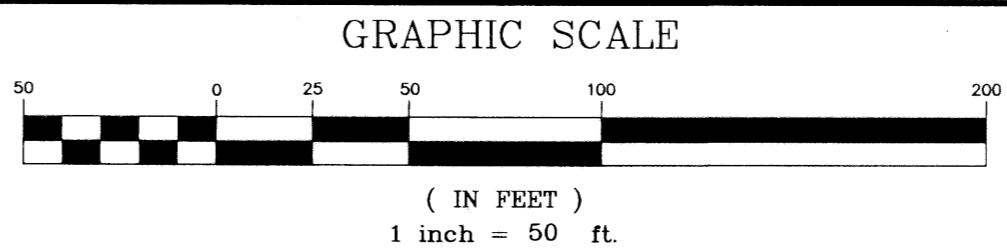


SMITH DAIRY WEST P.U.D.-PLAT No. 10
 BEING A REPLAT OF PART OF BLOCKS 38 AND 39 OF PALM BEACH FARMS
 COMPANY PLAT No. 3, AS RECORDED IN PLAT BOOK 2, PAGES
 45 THROUGH 54 OF THE PUBLIC RECORDS OF PALM BEACH COUNTY, FLORIDA
 IN PART OF SECTION 4, TOWNSHIP 45 SOUTH, RANGE 42 EAST,
 PALM BEACH COUNTY, FLORIDA
 SHEET 5 OF 5
 OCTOBER 1998

SCHOOL SITE

(OFFICIAL RECORDS BOOK 9405, PAGE 1279)



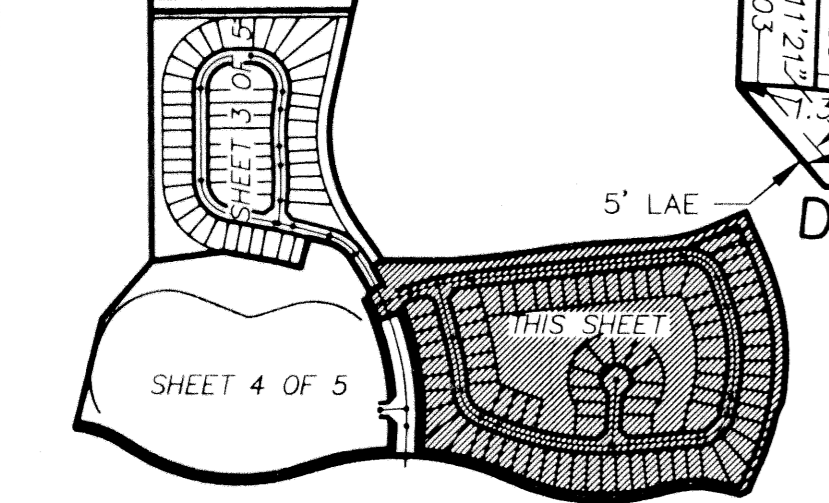
0633-016

181

MATCHLINE: SEE SHEET 3 OF 5

MATCHLINE: SEE SHEET 4 OF 5

SHEET INDEX



CURVE	CENTRAL ANGLE	LENGTH	RADIUS	CHORD BEARING	CHORD DISTANCE
C2	05°40'18"	98.99	1000.00	S73°45'16"W	98.95
C3	06°50'12"	119.32	1000.00	S80°00'31"W	119.25
C4	27°00'30"	471.38	1000.00	S81°46'38"E	467.03
C1	12°30'30"	218.31	1000.00	S77°10'22"W	217.88
C5	03°22'26"	58.88	1000.00	N86°24'20"E	58.88
C6	23°38'04"	412.50	1000.00	N80°05'25"W	409.58
C8	36°51'37"	643.33	1000.00	N16°51'08"W	632.30
C9	11°20'15"	197.88	1000.00	N29°36'49"E	197.56
C10	25°31'21"	445.45	1000.00	N11°11'01"W	441.78
C11	36°51'37"	643.33	1000.00	N16°51'08"W	632.30

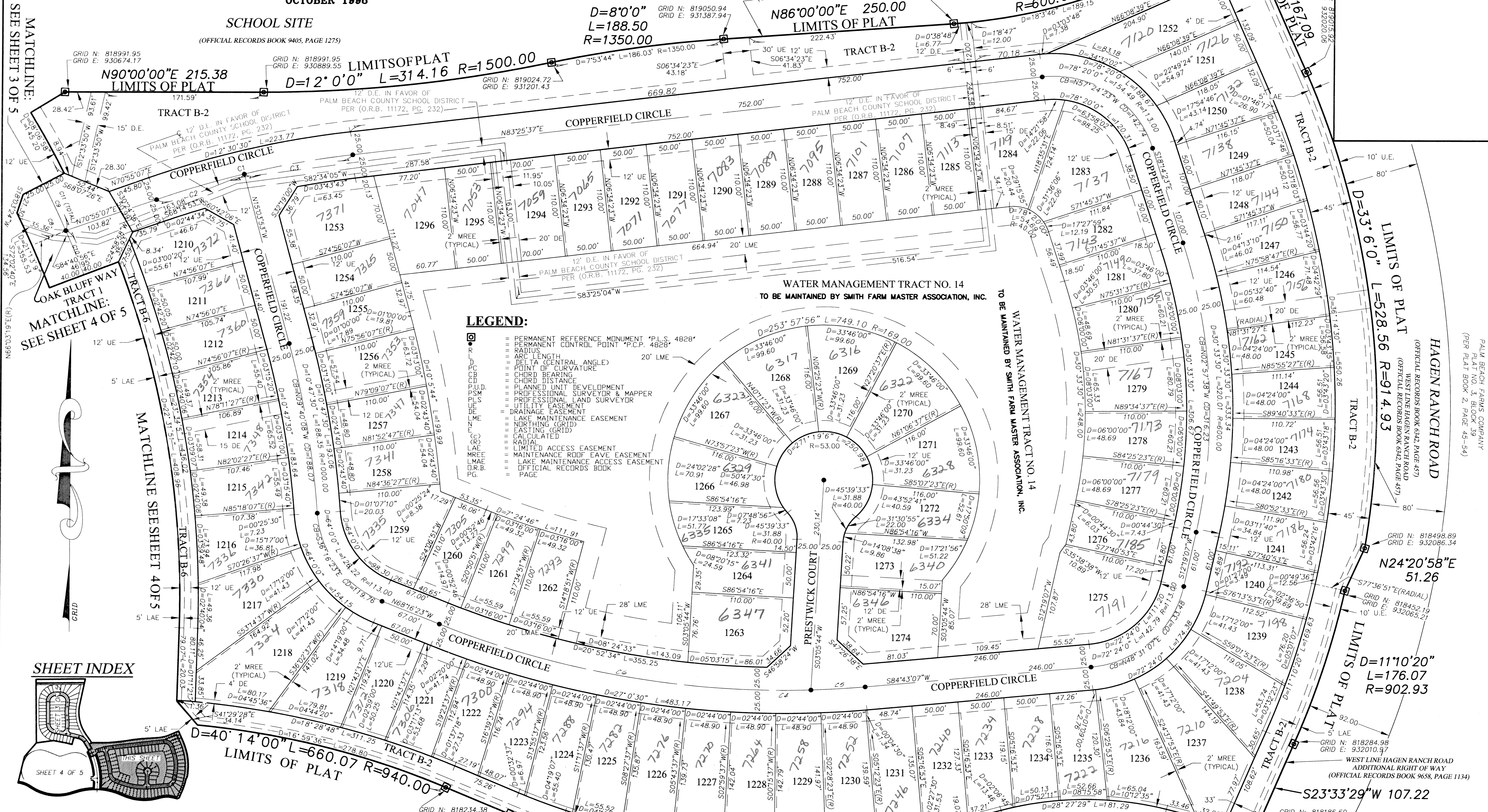
- LEGEND:**
- PERMANENT REFERENCE MONUMENT "P.L.S. 4828"
 - PERMANENT CONTROL POINT "P.C.P. 4828"
 - ARC LENGTH
 - DELTA (CENTRAL ANGLE)
 - RADIUS
 - CHORD BEARING
 - CHORD DISTANCE
 - PLANNED UNIT DEVELOPMENT
 - PROFESSIONAL SURVEYOR & MAPPER
 - PROFESSIONAL LAND SURVEYOR
 - UTILITY EASEMENT
 - DRAINAGE EASEMENT
 - LAKE MAINTENANCE EASEMENT
 - NORTHING (GRID)
 - EASTING (GRID)
 - CALCULATED
 - RADIAL
 - LIMITED ACCESS EASEMENT
 - MAINTENANCE ROAD EASEMENT
 - LAKE MAINTENANCE ACCESS EASEMENT
 - OFFICIAL RECORDS BOOK
 - PAGE

SMITH FARM BOULEVARD
 LIMITS OF PLAT
 (PER PLAT BOOK 82, PAGE 181-183)

SMITH FARM BOULEVARD
 LIMITS OF PLAT
 (PER PLAT BOOK 82, PAGE 181-183)

SCALE: 1"=50'
 DATE: OCT. 1998
 NICK MILLER, INC.
 Surveying & Mapping Consultants

SMITH DAIRY WEST P.U.D. - PLAT No. 10
 2560 RCA Blvd., Suite 105
 Palm Beach Gardens, Florida 33410
 (561) 627-5200
 D.B.P.R. Business License No. 4318



PALM BEACH FARMS COMPANY
 PLAT NO. 3, BLOCK 38
 (PER PLAT BOOK 2, PAGE 45-54)

WEST LINE HAGEN RANCH ROAD
 ADDITIONAL RIGHT OF WAY
 (OFFICIAL RECORDS BOOK 9658, PAGE 1134)

DRAWING NUMBER
 94014FT